






# timberfix® plus Hex Head Structural Timber Screw



## timberfix® Multi-Ply Structural Timber Fastener

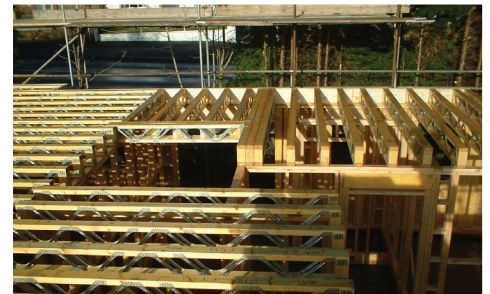


Hex drive structural timber screw, also ideal for exterior landscaping with 1000 hours salt spray resistance.

-  Fastening of multiple metal web and I-joists.
-  Pending endorsement by MiTek Technology for connecting 2 ply chords.
-  Meets the requirements of service class 1,2 & 3 according to EN1995-1-1.
-  CPR compliant backed by independent testing by TRADA technology.
-  High quality boron steel.

### Size Range:

- 6.5 x 250
- 6.5 x 200
- 6.5 x 150
- 6.5 x 125
- 6.5 x 115
- 6.5 x 100
- 6.5 x 90
- 6.5 x 75
- 6.5 x 65



Aptus Fastener Systems Ltd  
Salterwood Drive  
Denby Hall Business Park  
Denby, Derbyshire  
DE5 8JY